

PATENT ABSTRACTS OF JAPAN NEWS

PAJ News is distributed overseas to provide the latest patent information of Japan and to maintain solid communication with foreign patent offices.

No. **39**
2006

Table of Contents

<i>1. Eighth Edition of the IPC</i>	<i>2</i>
<i>2. Issuance of PAJ (IPC Eighth Edition).....</i>	<i>5</i>
<i>3. PAJ Issuance Schedule.....</i>	<i>7</i>

*The eighth edition of the International Patent Classification (IPC8) entered into force on January 1st 2006, and the Patent Abstracts of Japan (PAJ) will be changed in accordance with IPC8 from the April 26th issue (patent applications published in January 2006 in Japan). This issue of PAJ News explains the outline of the revision of the IPC and changes in the indications for IPC symbols in the PAJ as well as the updating of MIMOSA (in order to accommodate IPC8).

1. Eighth Edition of the IPC

IPC is an internationally uniform classification for patent documents. It is employed as a useful tool for patent document search by patent examiners, applicants, and other patent users.

Under the Strasbourg Agreement Concerning the International Patent Classification (signed in 1971; came into effect on October 7, 1975), the contracting parties shall indicate IPC symbols in patent documents.

However, for large patent offices dealing with a vast number of publications, the traditional IPC was not detailed enough for conducting precise and effective searches, while for small patent offices dealing with a small number of publications, it was too detailed and the assignment of classification imposed a large workload. It was also pointed out that revision only once in five years was insufficient in light of the accelerating advancement of technology.

Under such circumstances, the WIPO/IPC Reform Working Group decided to initiate IPC reform project in March 1999. As a result of discussions, IPC8 entered into force on January 1st 2006. The main features of IPC8 are as follows.

<Outline of the Eighth Edition of the IPC>

Division into two levels

The IPC has been divided into the “advanced level” and the “core level.”

The “advanced level” (about 70 000 entries) is employed by large patent offices including the Japan Patent Office (JPO). It may be updated, if necessary, every three months (on January 1st, April 1st, July 1st, and October 1st each year) in order to adapt appropriately to technical development which is speeding up.

The “core level” is a relatively simple classification (about 20 000 entries) that is easy to use for small and medium-sized patent offices. It will be revised once every three years.

Reclassification of published documents based on the latest edition

All of the patent documents defined as the back file of the PCT minimum documentation will be reclassified with the latest IPC version. It will enable us to search all documents by using only the latest edition of the IPC.

Review of the classification rule

The basic rule for classification previously applied was the “best fit rule,” i.e. finding the most suitable entry from all entries in the IPC. Under IPC8 and subsequent editions of the IPC, the first place priority rule will be applied in principle to the fields revised in the advanced level classification for the purpose of simplifying the classification rule and eliminating variations for classification.

Standardised sequence

The standardised sequence follows the principle of proceeding from more complex to less complex subject matter and from specialised to non-specialised matter of the subclass in the same section of the classification table. This sequence is introduced to the fields applied to the first-place priority rule.

Construction of the Master Classification Database (MCD)

The European Patent Office (EPO) has developed a database called the Master Classification Database (MCD) holding classification information for patent documents published by patent offices of IPC Union, and the EPO handles the information in the MCD for uniform management. Each patent office will send classification information to the MCD such as the IPC assigned to the patent application filed in the country, the edition thereof, and the date of classification, and it can use replicated data from the MCD for patent document search.

Indication in publications

The advanced level of the IPC used by the large offices including the JPO will be revised every three months where necessary. Therefore, the date of revision will be indicated for each classification symbol, instead of indicating the edition number as the superscript of "Int.Cl." as in the case of the seventh and previous editions. Invention information is distinguished from additional information by a bold font, and the advanced level is distinguished from the core level by an Italic font.

<Indications in a bulletin issued by the JPO and patent offices that only use the advanced level>

Int.Cl.

B28B 5/00 (2006.01) Advanced level - invention information

B28B 1/29 (2007.04) Advanced level - invention information

H05B 3/18 (2008.07) Advanced level - additional information

<Indications in a bulletin issued by patent offices that use only the core level>

Int.Cl. (2006)

B28B 5/00 Core level - invention information

B28B 1/00 Core level - invention information

H05B 3/10 Core level - additional information

<Indications in a bulletin issued by patent offices that use both the advanced and core level>

Int.Cl. (2006)

B28B 5/00 (2006.01) Advanced level - invention information

B28B 1/29 (2007.04) Advanced level - invention information

H05B 3/10 Core level - additional information

Publication of the IPC8 scheme

The original version of the IPC8 scheme is available on the WIPO website (in English and French).

URL: <http://www.wipo.int/classifications/ipc/ipc8/>

Information on IPC8 is also available on the EPO website.

URL: <http://ipc-reform.european-patent-office.org/>

Frequent asked questions and answers on IPC8

- Q . Can we distinguish the core level from the advanced level in the classification scheme?
- A . The IPC scheme available on the WIPO website is equipped with the function enabling you to change the level viewed, i.e. to switch between the advanced level and the core level .
- Q . The IPC will be revised, if necessary, every three months. Will a new classification scheme be also issued every three months?
- A . When the IPC is not revised, a new scheme will not be issued as well and an announcement will be made to this effect.
- Q . How can we know when a particular entry in the classification was revised?
- A . You can find the date of revision by version indicator at the end of the title of each entry in the advanced level classification scheme. For instance, with respect to updated entries that will take effect in July 2006, the date of revision will be indicated as version indicator using the square brackets, e.g. [2006.07], following the title of the respective entries in the classification scheme.
- Q . Can we use IPC8 for “PAJ Search” on the IPDL?
- A . Since each PAJ has the IPC assigned when the publication is issued, you have to use the previous editions of the IPC that were applied at the time of publication when searching for publications issued in December 2005 or before.

2. Issuance of PAJ (IPC Eighth Edition)

<Change in the indication on PAJ (IPC8)>

(19) JAPANESE PATENT OFFICE

PATENT ABSTRACTS OF JAPAN

(11) Publication number: 2006000001 A
(43) Date of publication of application: 05.01.06

(54) BRUSH FOR FISHING
(57) Abstract:
PROBLEM TO BE SOLVED: To provide a brush for fishing readily cleanable even when stains harden or stick thereto.
SOLUTION: This brush for fishing is composed so as to be equipped with a body part 12 having brush bristles 10 set therein, a handle part 14 connected to the body part and a spatula-shaped part 20 provided near the peripheral part of the body part and scraping off the stains sticking to a bait container, or the like.
COPYRIGHT: (C)2006,JPO&NCIPI

(51)Int. Cl. **A01K 97/00** (2006.01)
A47L 13/08 (2006.01)
A47L 13/10 (2006.01)

(21) Application number: 2004176390 (71) Applicant:
(22) Date of filing: 15.06.04 (72) Inventor:

(PN) Publication number: JP 2006000001 20060105
(AN) Application number: JP 2004176390 20040615
(PA) Applicant: DAIWA SEIKO INC
(IN) Inventor: OZEKI TAKAFUMI
(ET) English title: BRUSH FOR FISHING
(AB) Abstract:
To provide a brush for fishing readily cleanable even when stains harden or stick thereto.
This brush for fishing is composed so as to be equipped with a body part 12 having brush bristles 10 set therein, a handle part 14 connected to the body part and a spatula-shaped part 20 provided near the peripheral part of the body part and scraping off the stains sticking to a bait container, or the like.

IPC Class. advanced level - Invention information:
A01K 97/00 200601
ICAA) Class. advanced level - Additional information:
A47L 13/08 200601
A47L 13/10 200601

IPC Eighth Edition

<Addition of new criteria for MIMOSA (IPC8)>

MIMOSA

Criteria

Criteria	Description	Synonyms
AB	Abstract	
AD	Filing date	
AN	Application number	
ET	English title	
IA	Additional classification index	
ICA	Classifications advanced level	
ICAA	Class. advanced level - Additional information	
ICAI	Class. advanced level - Invention information	
SCL	IPC, linked index code(s)	
IN	Inventor	
IPC	All classifications (1-8)	
KD	Document kind	
PA	Applicant	
PC	Publishing country	
PD	Priority date	
PN	Publication number	
PR	Priority number	
PRESEN	Presence of data	
PY	Priority date	

Report mask

Submit query Show results

New criteria for the IPC8

- ICA Classifications advanced level
- ICAA Class. advanced level - Additional information
- ICAI Class. advanced level - Invention information

* Since Japan uses the advanced level, new criteria concerning the advanced level are added.

- IPC All classifications (1-8)

* Users can search the entire range of classification fields, including classification symbols for the former IPC editions (1st to 7th), and symbols of the new IPC (8th edition) simultaneously.

<Setting of MIMOSA>

MIMOSA has been upgraded to correspond to the eighth edition of the IPC. The new version is available on the PAJ CD-ROMs issued on April 26, 2006 and after.

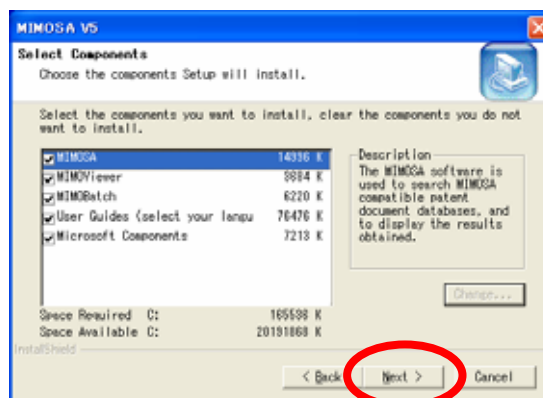
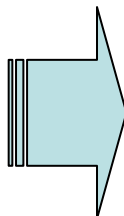
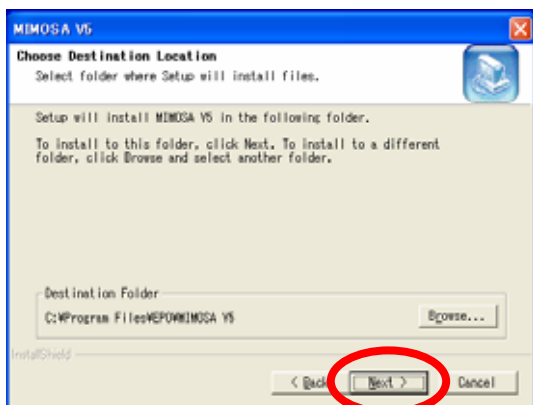
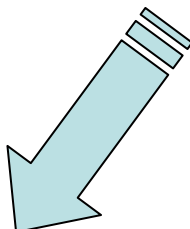
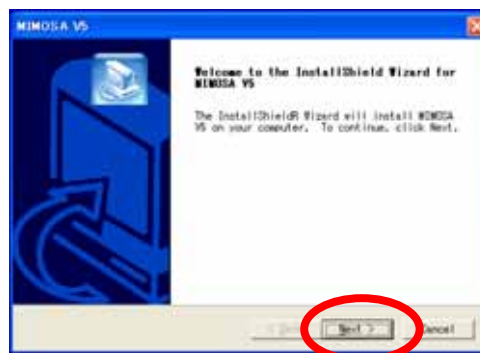
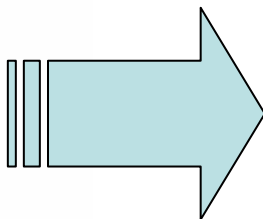
The former version cannot be used for IPC searches and may not be able to indicate correct IPCs. Please update MIMOSA using "update.exe" in the CD-ROM.

How to install MIMOSA

First installation of MIMOSA

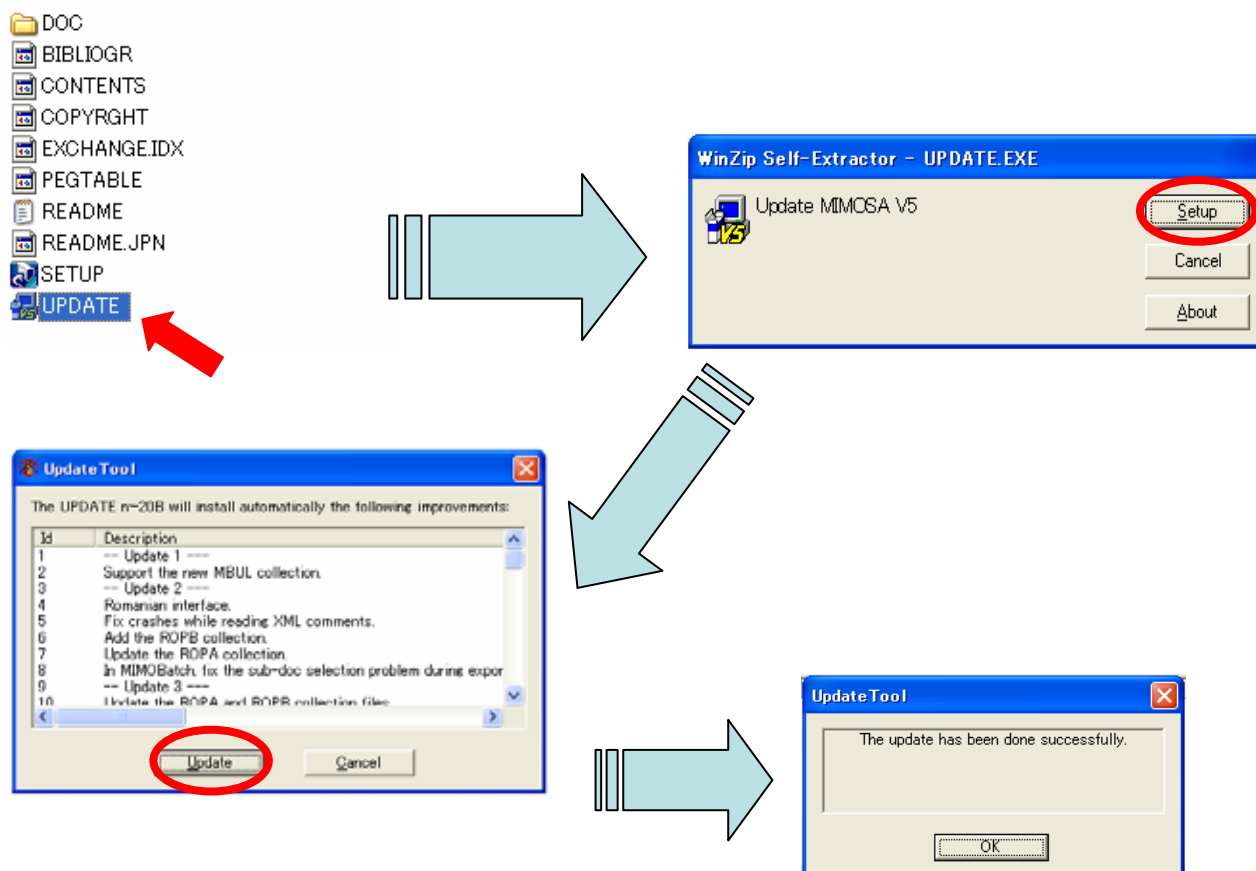
Step1: Execute "setup.exe" in the CD-ROM and install "MimosaAP5.0.5.0".

Step2: Execute "update.exe" after the installation of "MimosaAP5.0.5.0" is completed.



How to update MIMOSA

Step1: Execute "update.exe" in the CD-ROM.



3. PAJ Issuance Schedule

[2006]

Date of publication of PAJ	PAJ			PAJ index
	Serial number for the year	Total serial number	Number of PAJ stored	Coverage
Jan. 31 (Tue.)	2006-1	133	34,400	2005-1[121]/2005-12[132]
Feb. 28 (Tue.)	2006-2	134	24,400	
Mar. 31 (Fri.)	2006-3	135	26,200	
Apr. 26 (Wed.)	2006-4	136	25,600	2006-1[133]/2006-3[135]
May 29 (Mon.)	2006-5	137	29,400	
Jun. 28 (Wed.)	2006-6	138	32,300	